

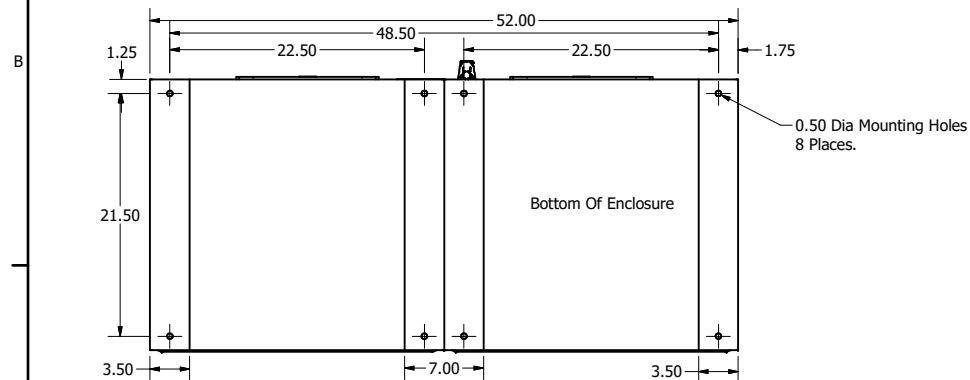
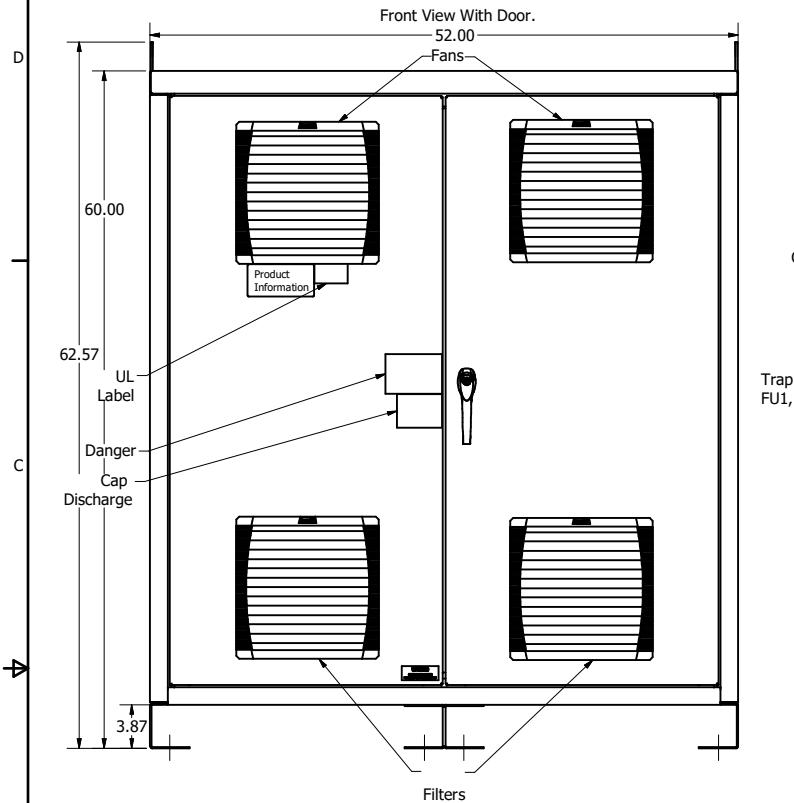
HGP Enclosed Type 1, Part Number	Schematic Drawing #	Approx Weight (LBS)	Shop Drawing #
HGP0700AW1S000#	28697-SS	1486	105498-T1
HGP0700AW1C000#	28697-5	1500	105498-T2
HGP0700AW1C*00#	29597-PQ	1502	105498-T13

***=Communication Option**
#=Mechanical Option

HGP Part Number	HorsePower (HP)	kVar	Maximum Amps (A)	Harmonic	Voltage (V)	Hz.	Phase
HGP0700AW1---	700	210	840	5th	480	60	3

Customer Connections:
L1, L2, L3, T1, T2, T3, and
Ground Lug.
Wire Range- Four, 600MCM-2AWG

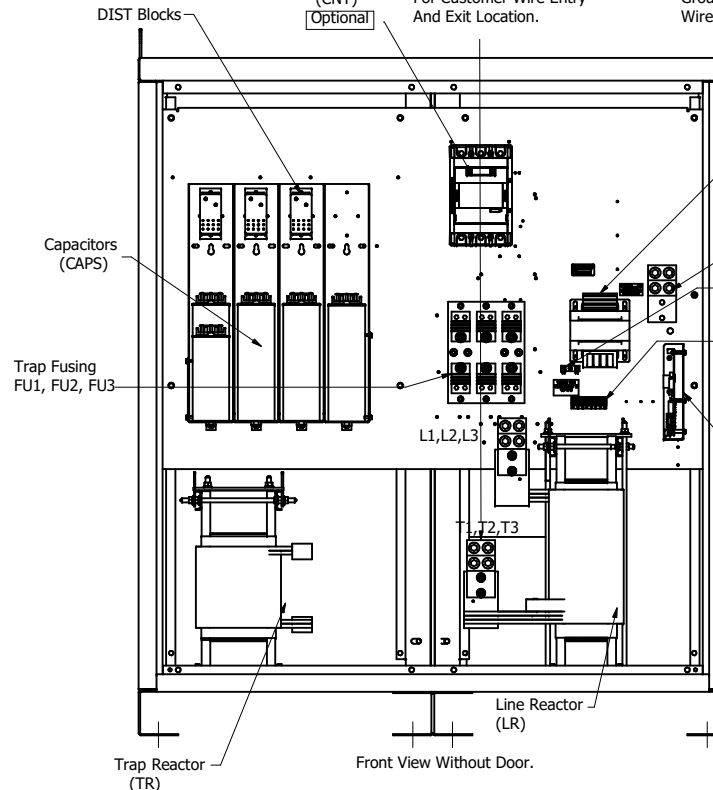
Note: For Torque Information
See IOM Manual.



HGP0700AW----			
Components	1S000#	1C000#	1C*00#
Line Reactor (LR)	X	X	X
Trap Reactor (TR)	X	X	X
Capacitor (Cap)	X	X	X
Trap Fusing, FU1, FU2, FU3	X	X	X
Contactor (CNT)		X	X
Transformer (XFMR)	X	X	X
XFMR Fusing, FU4, FU5	X	X	X
PQConnect Board			X

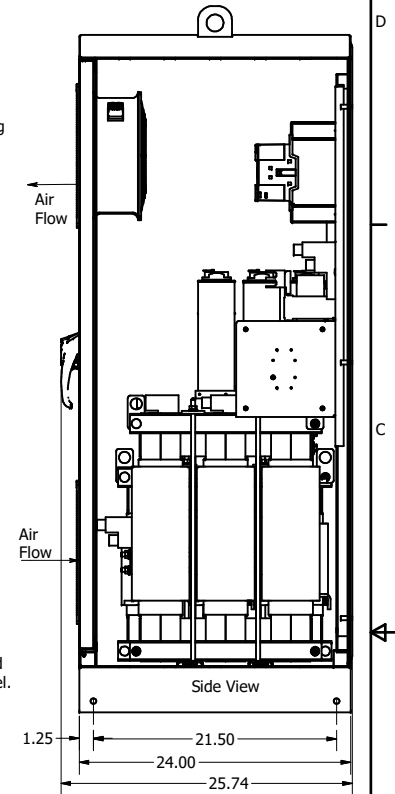
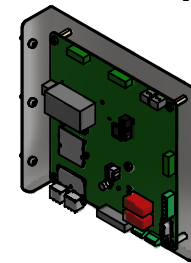
***=Communication Option**
0= No Connectivity
1= PQconnect w/Modbus RTU over RS485
2= PQconnect w/Ethernet IP

#=Mechanical Option
0= No Option
H= Heater (Only in Type 3R)
V= Vibration Pads
T= Thermal Switches



Transformer (XFMR)
Transformer Fusing
FU4, FU5
Ground Lug
(GRD)
FU6
When Supplied
Terminal Block
(TB)

PQConnect Board
Mounted on Panel.
Optional



Thermal Switch, Terminal Block
(Optional) Located on Inductors



Wire Range: 18 AWG To 4 AWG.
Torque: 20 LB-IN (2.3 Nm)

Switch Opens on Temperature Rise
Contact Rating: 6A @ 120 VAC, Resistive
Contact Rating: 5A @ 120 VAC, Inductive

Customer Is Responsible For Installation to
Meet All National And Local Electrical Codes.

Material(s) Shall be RoHS Compliant

THE INFORMATION AND DESIGNS CONTAINED
IN THIS DRAWING ARE CONFIDENTIAL AND THE
PROPRIETARY PROPERTY OF ALLIED MOTION
TECHNOLOGIES INC. AND ITS SUBSIDIARIES.
NEITHER THIS DESIGN NOR ANY INFORMATION
CONTAINED IN THIS DRAWING MAY BE
REPRODUCED OR DISCLOSED TO OTHERS
WITHOUT THE EXPRESS WRITTEN CONSENT OF
ALLIED MOTION TECHNOLOGIES INC. AND ITS
SUBSIDIARIES.

NO	REVISION	DATE	BY	DATE	BY
H	6495, KTR210A65(HGP) to (HG)	11/20/2023	DSW		
G	6024, PQ/Mech Options Added	8/1/2023	DSW		
F	5628 GE to ABB CNT CHG.	12/8/2021	DSW		
E	5755, LR and PT Terminal updated	10/25/2021	DSW		

TOLERANCES (EXCEPT AS NOTED)
DECIMAL
.XX ± .25
.XXX ± .10
FRACTIONAL
± 1/16
ANGULAR
± 1°

TCL		W132N10611 (Rev 13Fv6) Germano, WI 53022	
An Official Motion Company		© 2023 TCL, LLC	
HarmonicGuard Passive, HGP0700AW1----		HGP, 700HP, 480/3/60, Type 1	
OWN BY: DSW	DATE: 4/30/15	105498DG	
SCALE: 1/8"	REVISE	REV	